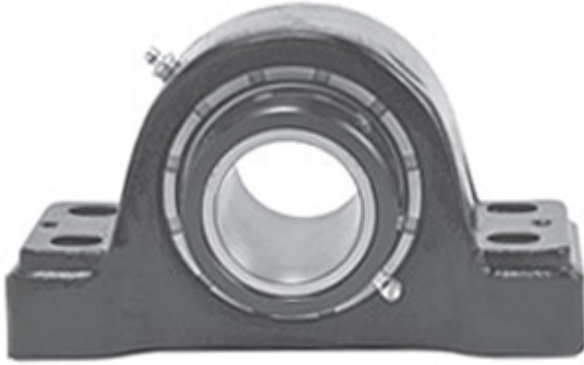




# TIMKEN BEARING CORP.of CANADA LTD.

2.938 Inch | 74.625 Millimeter x 4 Inch | 101.6  
Millimeter x 3.25 Inch | 82.55 Millimeter LINK  
BELT PKB22447FE Pillow Block Bearings



PKB22447FE Bearing 2D drawings and 3D CAD models

Bearing No. PKB22447FE

Category	Pillow Block Bearings
Inventory	0.0
Manufacturer Name	REXNORD
Minimum Buy Quantity	N/A
Weight	13.17
EAN	0662327463052
Product Group	M06288
Number of Mounting Holes	4
Mounting Method	Concentric Collar
Housing Style	4 Bolt Pillow Block
Rolling Element	Spherical Roller Bearing
Housing Material	Cast Steel
Expansion / Non-expansion	Non-expansion
Mounting Bolts	5/8 Inch
Relubricatable	Yes
Insert Part Number	B22447EL
Seals	Spring Loaded Lip
Housing Configuration	1 Piece Solid
Inch - Metric	Inch
Other Features	Double Row   Single Collar   Extended Inner Race   With Set Screw
Long Description	4 Bolt Pillow Block; 2-15/16" Bore; 3-1/4" Base to Center Height; Concentric Collar Mount;



## TIMKEN BEARING CORP.of CANADA LTD.

	Spherical Roller Bearing; Relubricatable; Cast Steel; Spring Loaded Lip; Non- expansion
Category	Pillow Block
UNSPSC	31171511
Harmonized Tariff Code	8483.20.40.80
Noun	Bearing
Keyword String	Pillow Block
Manufacturer URL	<a href="http://www.rexnord.com">http://www.rexnord.com</a>
Manufacturer Item Number	PKB22447FE
Manufacturer Internal Number	5846305
Weight / LBS	29
Bolt Spacing Maximum	0 Inch   0Millimeter
D	4 Inch   101.6 Millimeter
Nominal Bolt Center to Center	8.1 Inch   206.4 Millimeter
Bolt Spacing Minimum	0 Inch   0Millimeter
d	2.938 Inch   74.625 Millimeter
Actual Bolt Center to Center	8.1 Inch   206Millimeter
B	3.25 Inch   82.55 Millimeter