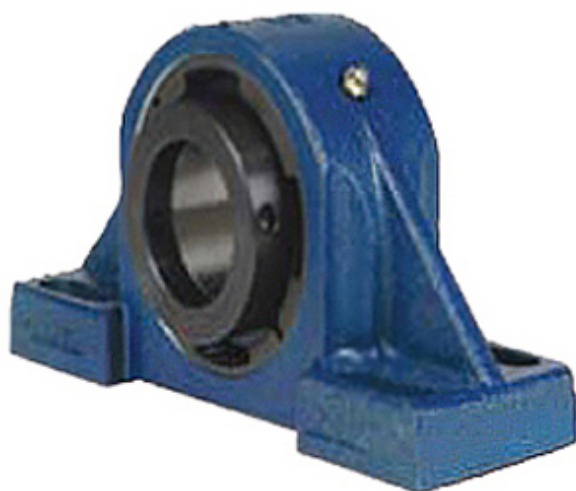




TIMKEN BEARING CORP.of CANADA LTD.



2.75 Inch | 69.85 Millimeter x 3.62 Inch | 91.948
Millimeter x 3.25 Inch | 82.55 Millimeter QM
INDUSTRIES QAPF15A212SEN Pillow Block
Bearings

Bearing No. QAPF15A212SEN

QAPF15A212SEN Bearing 2D drawings and 3D CAD
models

Category	Pillow Block Bearings
Inventory	0.0
Manufacturer Name	TIMKEN
Minimum Buy Quantity	N/A
Weight	9.988
EAN	0883450331739
Product Group	M06288
Number of Mounting Holes	4
Mounting Method	Concentric Collar
Housing Style	4 Bolt Pillow Block
Rolling Element	Spherical Roller Bearing
Housing Material	Cast Steel
Expansion / Non-expansion	Expansion
Mounting Bolts	5/8 Inch
Relubricatable	Yes
Insert Part Number	22215
Seals	Triple Lip Viton
Housing Configuration	1 Piece Solid
Inch - Metric	Inch
Other Features	Double Row Single Collar With Set Screw
Long Description	4 Bolt Pillow Block; 2-3/4" Bore; 3-1/4" Base to Center Height; Concentric Collar Mount; Spherical Roller



TIMKEN BEARING CORP.of CANADA LTD.

	Bearing; 7.6" Minimum Bolt Spacing; 9.1" Bolt Spacing Maximum; Relubricata
Category	Pillow Block
UNSPSC	31171511
Harmonized Tariff Code	8483.20.40.80
Noun	Bearing
Keyword String	Pillow Block
Manufacturer URL	http://www.qmbearings.com
Weight / LBS	27
Bolt Spacing Maximum	9.1 Inch 231.14Millimeter
Bolt Spacing Minimum	7.6 Inch 193.04Millimeter
D	3.62 Inch 91.948 Millimeter
B	3.25 Inch 82.55 Millimeter
Actual Bolt Center to Center	0 Inch 0Millimeter
Nominal Bolt Center to Center	8.1 Inch 206.4 Millimeter
d	2.75 Inch 69.85 Millimeter